

New Student Introduction: Adrienne Bryant



acbryant@mymail.mines.edu

M.S. Candidate

May 2022 (expected)





Colorado School of Mines, May 2020
B.S. in Geological Engineering

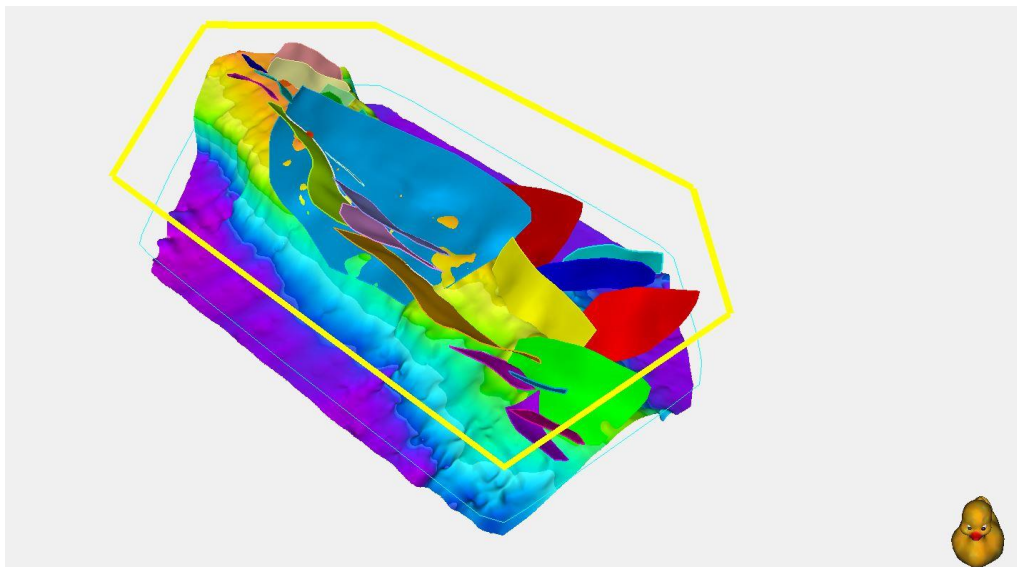
Colorado School of Mines, May 2022
(anticipated)
M.S. Geology Candidate



The Oredigger



- Senior design class: Petroleum Exploration Design
 - Developed an integrated structural/stratigraphic interpretation of the Northern Paradox Basin and the Northern Carnarvon Basin.
 - Located potential traps.
- Field Session
 - Created geologic maps in a variety of geologic regimes.



Top salt surface with faults in the Paradox Basin study area



Jackpile Fm, White Mesa, NM



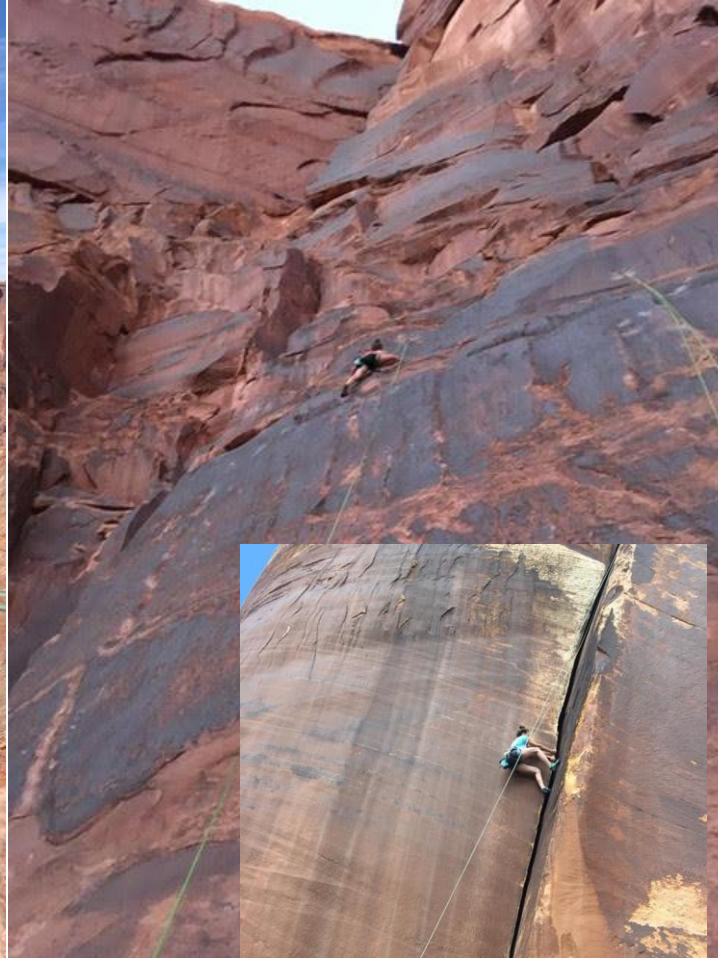
The Graneros Shale in the Denver Basin

- Further characterize this important source rock.
- Methods to be used include:
 - XRF
 - XRD
 - Core analysis
 - FE-SEM
- My committee members are: Steve Sonnenberg, Marsha French, Keith Shanley, and Jeff May.

System/ Series	Stratigraphic unit		Storage Assessment Unit (SAU) notes	
	North and Western Denver Basin	Eastern Denver Basin and adjacent areas		
Tertiary	Denver Formation	Dawson-Denver Formations		
Upper Cretaceous	Arapahoe Formation	Arapahoe Formation	Terry and Hygiene Sandstone Members SAU C50390105 Seal: Pierre Shale Reservoir: Sharon Springs Member and Hygiene "Shannon" and Terry "Sussex" Sandstone Members	
	Laramie Formation	Laramie Formation		
	Fox Hills Sandstone	Fox Hills Sandstone		
	Richard Sandstone Member	Terry 'Sussex' Ss. Member		
	Pierre Shale	Hygiene 'Shannon' Ss. Member	Niobrara Formation and Codell Sandstone SAU C50390104 Seal: Pierre Shale Reservoir: Codell Sandstone Member of the Carlile Shale, Fort Hays Limestone and Smoky Hill Shale Members of the Niobrara Formation	
	Terry Sandstone Member	Sharon Springs Member		
	Hygiene Sandstone Member	Smoky Hill Shale Member		
	Niobrara Formation	Fort Hays Limestone Member	Fort Hays Limestone Member	Greenhorn Limestone SAU C50390103 Seal: Carlile Shale Reservoir: Greenhorn Limestone
	Codell Sandstone Member	Codell Sandstone Member		
	Carlile Shale	Carlile Shale		
	Greenhorn Limestone	Greenhorn Limestone	Muddy Sandstone SAU C50390102 Seal: Mowry and Graneros Shales Reservoir: Muddy ("J") Sandstone and "D" sandstone	
	Graneros Shale	Graneros Shale		
Lower Cretaceous	Mowry Shale	Mowry Shale equivalent	Plainview and Lytle Formations SAU C50390101 Seal: Skull Creek Shale Reservoir: Lytle Formation, "Lakota" of drillers, "Dakota" of drillers, Inyan Kara Group, Plainview Formation, and Plainview Sandstone Member of the South Platte Formation	
	Dakota Group South Platte Fm.	Muddy ("J") Sandstone		
	Upper members, South Platte Formation	Skull Creek Shale		
	Plainview Ss. Member	Plainview Formation	"Dakota" of drillers	
	Lytle Formation	Inyan Kara Gp.	"Lakota" of drillers	
Jurassic	Morrison Formation	Morrison Formation		
	Ralston Creek Formation	Older Jurassic rocks may be present		
	Sundance Formation			
Triassic	Jelm Formation	Jelm Formation		
Permian	Lykins Formation	Lykins Formation		
	Lyons Sandstone	Lyons Sandstone		
	Owl Canyon Formation	Owl Canyon Formation		
	Ingleside Formation	Ingleside Formation		

Drake et al., 2012

Outside of Academics



MUDTOC Consortium Sponsors

Fall 2020



Sponsoring Member Companies



Supporting Companies

GEOMARK

Mike Johnson & Associates



Schlumberger



THE ENERGY OF
enerPLUS

